

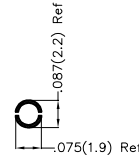
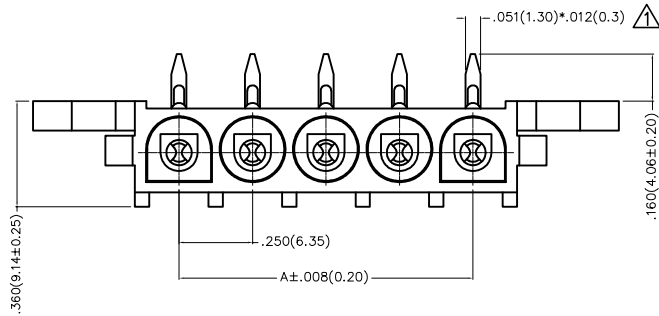
REV	LOCATIONS	DESCRIPTION	DATE	REVISER	APPD
1	△	Update dimensions and tolerances	15/JAN/26	MATT	LEO

Electrical

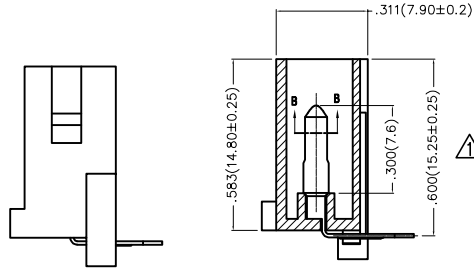
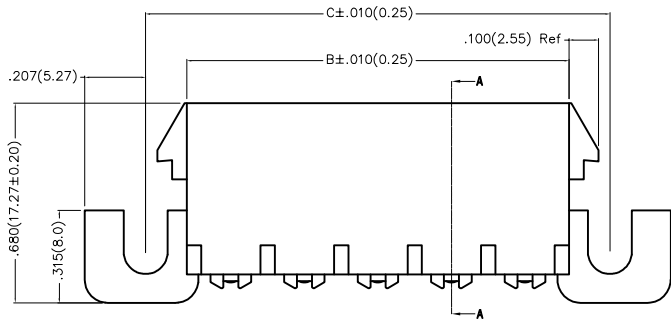
Current Rating: 13.5A AC(rms)/DC
 Voltage Rating: 600V AC(rms)/DC
 Contact Resistance: 3.5 mΩ Max
 Insulation Resistance: 1000 MΩ MIN
 Withstanding Voltage: 5000V AC r.m.s
 Temperature Range-Operating: -40°C~+105°C

Material and Plating

Housing: PA66(UL 94V-0)
 Contact Pin: Brass
 Plating: Tin Plated



Section B-B △



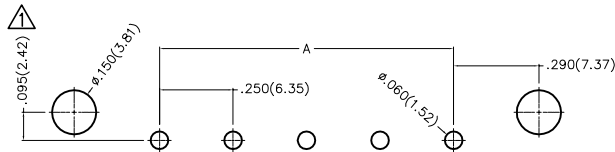
Section A-A

Circuits (n)	Part No.	Dimensions(in/mm)		
		A	B	C
2	FWF63509-S02B22W1K	.250(6.35)	.550(13.97)	.830(21.08)
3	FWF63509-S03B22W1K	.500(12.70)	.800(20.32)	1.080(27.43)
4	FWF63509-S04B22W1K	.075(19.05)	1.050(26.67)	1.330(33.78)
5	FWF63509-S05B22W1K	1.000(25.40)	1.300(33.02)	1.580(40.13)
6	FWF63509-S06B22W1K	1.250(31.75)	1.550(39.37)	1.830(46.48)
7	FWF63509-S07B22W1K	1.500(38.10)	1.800(45.72)	2.080(52.83)
8	FWF63509-S08B22W1K	1.750(44.45)	2.050(52.07)	2.330(59.18)
9	FWF63509-S09B22W1K	1.972(50.08)	2.300(58.42)	2.580(65.53)
10	FWF63509-S10B22W1K	2.250(57.15)	2.550(64.77)	2.830(71.88)

Ordering Information

FWF 635 09 - S XX B 2 2 W1 K
 1 2 3 4 5 6 7 8 9 10

1 Category FWF-Wafer	2 Series Number 635-Pitch6.35mm	3 Distinction No. 09	4 Row Option S-Single Row	5 Circuits XX	6 Entry Angle B-90° Angle
7 Plating 2-Tin Plated	8 Material-Resin 2-PA66	9 Color-Resin W1-White	10 Packaging K-Tray		



Recommended P.C.Board Layout

General tolerances: ±.002(0.05)

THIRD ANGLE PROJECTION	GENERAL TOLERANCES (UNLESS SPECIFIED)		APPROVE BY FRANK	DATE 28/JUN/13	PART NO. FWF63509-SXXB22W1K	ITEM NO. FWF63509	
	DESIGN UNITS Inch (metric)	X.±.012(0.30)	X:±5'	CHECKED BY CHERRY	DATE 28/JUN/13	TITLE Wire to Board (Wafer) Pitch 6.35mm 90° Angle (DIP)	
SCALE 5:1		SIZE A4	X.XX±.006(0.15)	.XX'±1'	DRAWN BY KEVIN	DATE 28/JUN/13	THIS DRAWING CONTAINS INFORMATION THAT IS PROPRIETARY TO TXGA INDUSTRIAL ELECTRONICS(S.Z)CO.,LTD AND SHOULD NOT BE USED WITHOUT WRITTEN PERMISSION